



QUADURO
SYSTEMS



QUADPAD I

MOBILITY MEETS DURABILITY

QUADURO

TOOLS FOR PROFESSIONALS



The Quaduro Quadpad I is a slate tablet PC, and its capability is based on an architecture featuring mainstream operating systems, allowing users to run familiar applications in various surroundings at any time.

Installation on a LAN, WAN and WPAN via Bluetooth and WIFI enable connectivity to other systems on the network. Sync with POS systems; use it as a VoIP tool, a control panel for automation system, a PC based diagnostics tool in the automotive industry or simply a presentation tool the possibilities are endless.

Enhance the learning process for students, motivate and build enthusiasm by replacing conventional books with the cost effective windows based touch screen Quadpad I alternative. Offer a range of award winning contents included interactive multimedia learning resources. Cut costs associated with reporting and administration as well as the paperless school concept.

The Quadpad I is a semi rugged device built within its small, thin, and light platform design. The 8.4" Touch Screen LCD display and power-efficient technologies enable long battery life to extend productivity of the unit. The combination of such facilities makes the Quadpad an ideal cost effective tool in many vertical industries.

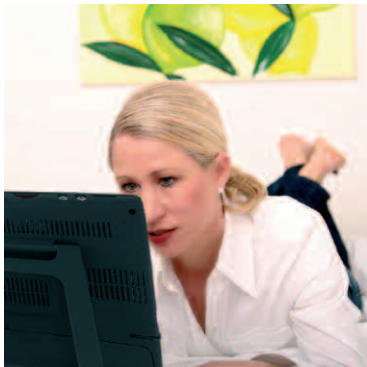


AUTOMOTIVE

- PC based Diagnostics.
- MOT station tool employing its remote usability and wireless capabilities.
- Semi rugged design ideal for the workshop environment.

EDUCATION

- GCSE learning tool.
- E-learning and adult education tool as an Interactive knowledge base.
- XP based machine, enabling use of all familiar software products and applications.
- Cost effective tool.



COMMUNICATION

- Voice over Internet communication via Wi-Fi using handsfree speaker or headphones.
- 3G compatible; use as a GPS Satellite navigation system using in car.
- Fast Mobile browsing via 3G PCMCIA card.

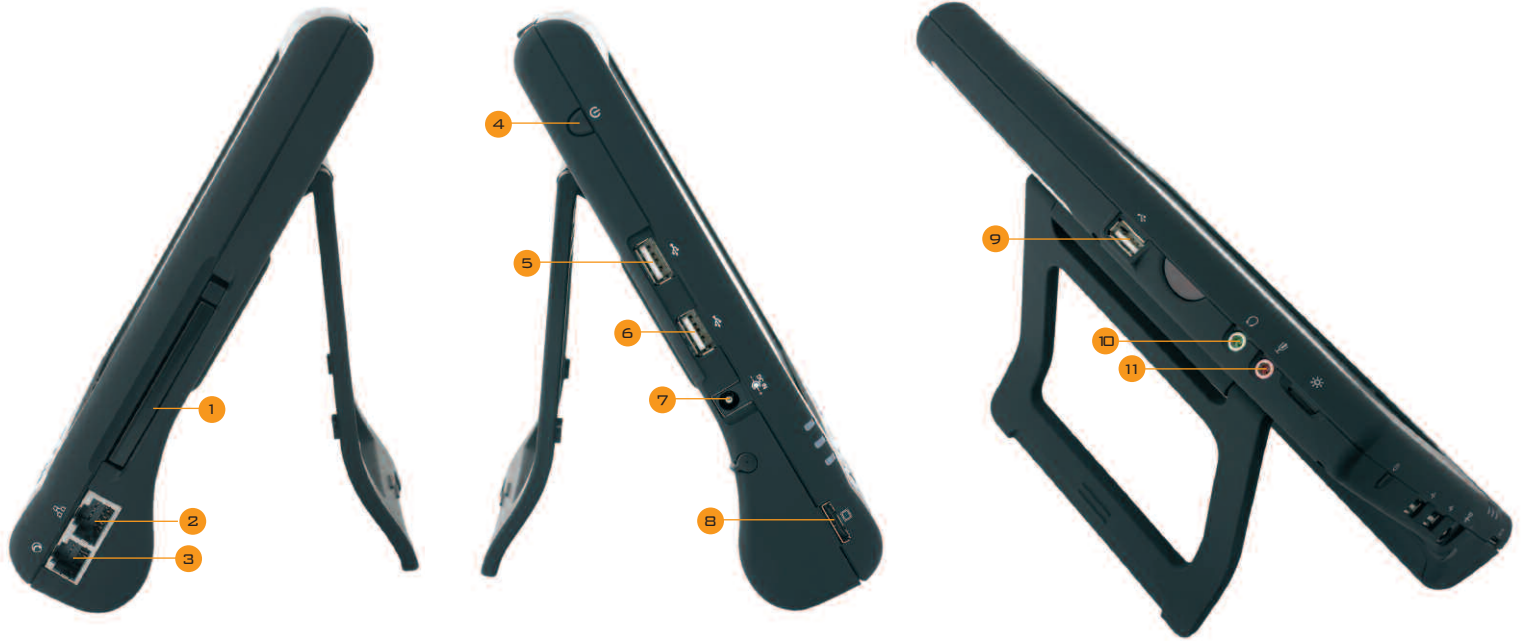
WIDER INDUSTRY

- Versatile Mobile Presentation tool.
- Off-site and out door use in Marketing, data collection and field studies.
- Access data and other resources through wireless access which allows you to toggle between WAN, WLAN and Bluetooth®.
- Jotter and post-it note applications - Voice Memo taking.
- Control panel and system interface device.



INPUT & OUTPUT

- 1: PCMCIA Slot
- 2: Modem Port
- 3: Ethernet Port
- 4: Power Button
- 5: USB Port
- 6: USB Port
- 7: DC In Port
- 8: Serial Port Converter
- 9: USB Port
- 10: Headphone Jack
- 11: Microphone Jack



OPTIONAL EXTRAS



RUBBER BUMP CASE

The extra support rubber bump case protects the Quadpad from everyday knocks and bumps, and is ideal for use in garages and workshops. The cover includes a neck strap, which allows the Quadpad to rest comfortably during use. Color : Black

12V CAR CHARGER

Operate your Quadpad I and charge your battery while traveling. The Quadpad I Car Adapter plugs into a standard automobile cigarette lighter. Built-in power level filtering and short circuit protection keep your Tablet safe from power fluctuations and unexpected power surges. Color : Black

AC POWER PACK

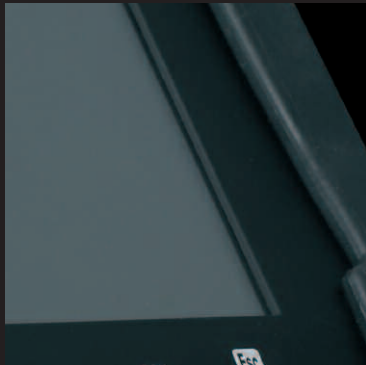
Avoid forgetting your AC Power Adapter, AC plug and power cord when traveling! A second AC Power Pack provides the convenience of working from multiple locations without the fuss of packing up the power sources for your Quadpad PC. Color : Black

HOLDER

A versatile, executive holder arm is a perfect vibration free mount solution for the Quadpad. It's extendible arm and swivel mechanism allows for perfect and optimum viewing position.

STYLUS PEN

Larger diameter provides improved ergonomics and makes writing easier with less user fatigue providing an experience that is closer to a standard pencil. Colour : Black



PRODUCT SPECIFICATION

Memory	512 MB DDR RAM
Processor	Via EDEN 1GB
System	Wizpro Bios APM 1.2
Communication	Wireless Wifi, 802.11
Bluetooth	Integrated
Modem	56Kbps V.92 MDC
Sound	LAN Realtech 10/100 Base-T
Hard Drive	AC-97 Audio on board, 16 bit stereo
Operating System	60Gb hard drive
Display	Windows XP Home Edition
Battery	8.4" Touch Screen TFT
Expansion I/O	Removable Lion Standard Battery Pack (up to 3 hours)
	3* USB Ports
	1 IrDA Port
	1 Earphone Jack
	1 Microphone Jack
	1 Mini VGA output Port
	10 Hot Key Quick Access Button
	4 Directional buttons
Weight	1.19KG (with Battery)
AC Adapter	Input : AC 100-240V 50/60 Hz
	Output : DC 16V, 3.13A
Dimensions	231mm * 192mm * 42mm



QUADURO SYSTEMS

WARRANTY/SUPPORT.

Quaduro Systems offer a 12-month warranty on all Quadpad products, which are designed with your convenience, timeliness, and business continuity in mind. In the unlikely event that you have a need for warranty repairs, a specially designed local support structure is set in place to ensure minimum downtime of your Quadpad tool.

ONLINE SUPPORT

Technical support is available electronically on Quaduro's website. Included are answers to many commonly asked technical questions plus most of easily downloadable software drivers.

QUADURO REPAIR CENTRE.

If your Quadpad Tablet PC requires warranty hardware repair, you may use the UK based Quaduro Repair centre option. Please call Quaduro Support or contact support via the Quaduro Website. The Global Support Center will assist you with troubleshooting over the phone. If it's confirmed that there is a hardware failure, you will receive a Case Number for tracking your unit through the repair process. Upon receipt of your portable computer at the Depot, specialist staff will make reasonable efforts to complete the repair and ship your repaired product back to you within three (3) business days.

GHz denotes microprocessor internal clock speed; other factors may affect application performance. CPU speed will be reduced Under certain operating conditions. GB means one billion bytes when referring to hard drive capacity. Accessible capacity may vary. Wifi Requires 802.11b or 802.11g compatible access point. Some functionality may require Internet services which may require a fee. Viewable area of the screen is measured diagonally.

© 2007 Dins International Ltd & Quaduro Systems. Reproduction in whole or in parts without written permission is prohibited. All rights reserved. Dins International, Quaduro, Quadpad I, Quadpad, and their respective logos are trademarks of Dins International LTD. "Tools for Professionals" is a servicemark of Dins International Ltd. Microsoft, Windows are trademarks of Microsoft Corporation. All other trademarks are trademarks of their respective owners.

The Quaduro Systems brand is fully owned and managed by:



DINS
INTERNATIONAL

213 Roxwell Studios
Roxwell Trading Park
Argall Avenue
London
E10 7QY
United Kingdom

Tel: +44 (0)20 8988 9908
Fax: +44 (0)56 0113 4279
Email: enquiries@dinsinternational.com

FOR MORE INFORMATION PLEASE GO TO:

WWW.QUADURO.COM